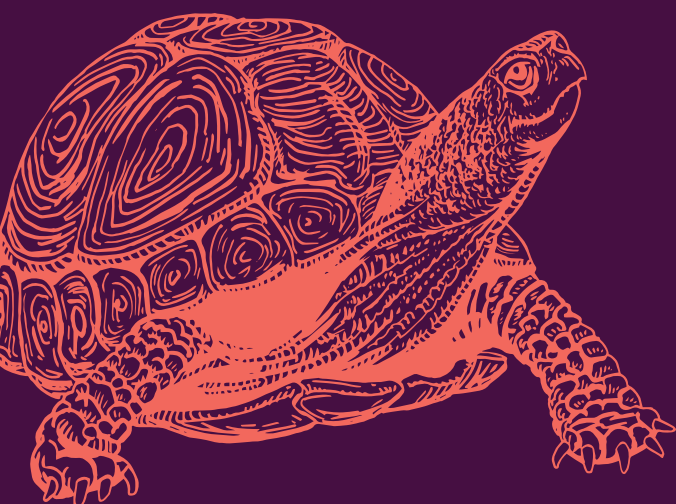
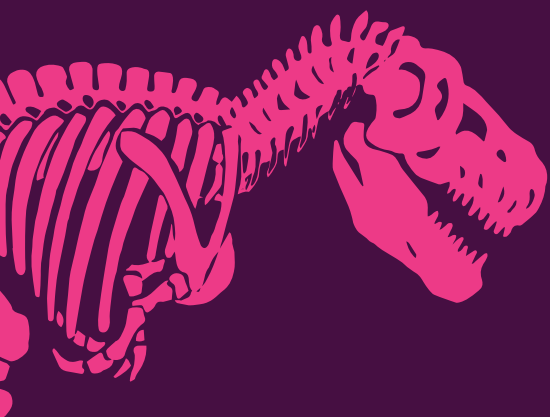


Melbourne Symphony Orchestra

CARNIVAL

of the Animals



MSO Relaxed, Sensory-Friendly Performance

Saturday 21 May 2022 / 12.30–1.20pm

Arts Centre Melbourne, Hamer Hall

Welcome!

This visual story is designed especially for you, the audience of the MSO's relaxed, sensory-friendly performance of **Carnival of the Animals**. It describes the kinds of things you will experience at this performance.

About the Performance

It is going to be really fun! You are going to see a specially curated program performed by the Melbourne Symphony Orchestra.

It will be a musical journey and you will meet a whole range of curious and wonderful characters.

Relaxed performance

This performance is relaxed with various elements adapted to reduce surprise, anxiety and make the concert more welcoming. You can expect:

- Friendly, trained MSO and Arts Centre Melbourne staff on hand to support you throughout your visit
- A relaxed attitude to noise and movement during the performance
- Theatre doors to stay open through the performance so you can come and go as you please
- Lighting and sound levels adjusted for the show
- A designated 'Quiet Area' available for anyone who feels overwhelmed, so you can take a break from the show
- The auditorium lights to stay on throughout the performance

If you would like any additional information in the lead up to your visit, please contact our friendly and knowledgeable MSO Box Office staff.

Phone: (03) 9929 9600 10am-6pm,
Monday to Friday

Email: boxoffice@mso.com.au



Content Warnings

Sometimes there will be pictures of animals on the walls or on the big screen at the front. Some of these animals might look scary, but they can't hurt you. They are just images.

Animal puppets will make guest appearances during the performance. Even though these puppets might look like animals, they are not real. You will see the following puppets on the stage during the performance: giant jellyfish, a shark, a life-size emu, an elephant, birds, shadow kangaroos, shadow fish, tiny tortoises, and koalas.

Two donkey puppets will move through the auditorium towards the stage. This will happen at the Stalls level. Bird puppets on large poles may fly over the first

row of the audience, from their position on the stage. The performers will let you know when they are going to move the donkey and bird puppets through the auditorium. Puppets and performers will not enter the Circle level.

The performers and musicians will sometimes pretend to be an animal or character, by moving their body and wearing a mask or costume. You will see them wearing the following masks and costumes during the performance: a lion, hens and roosters, people with long ears, a swan, and fossils.

Keep a watch out for bubbles blowing in the auditorium. They are filled with air. Can you pop one?

Lights might change colour or direction during the show. This helps the audience know where to look and helps to tell the story. Sometimes the stage lights will dim so that other special lights can shine more brightly. You will see a mirror ball on the stage, fish lighting to create the feeling of an aquarium, and glow worm torches in the auditorium. Shadows of animal puppets will appear on the screen.

The sound of the orchestra will come from the stage at the front of the audience.

Theatre Guidelines

- Photography and mobile devices are not permitted during the performance. However, if you need to use a device (like an iPad) to communicate or to enjoy the show, please inform the ushers. It's always fine to use a device in the foyer or Quiet Areas.
- During this performance a relaxed attitude is taken to movement, noise and eating/drinking in the auditorium.
- If you need to take a break during the show, you are welcome to come out into the foyer area. A Quiet Area will be available with low lighting.
- To ensure COVID safety, sensory items and earmuffs will only be available upon request. We encourage audiences to bring their own items that will help make you feel comfortable in the theatre, such as headphones, fidget toys etc.



The Theatre

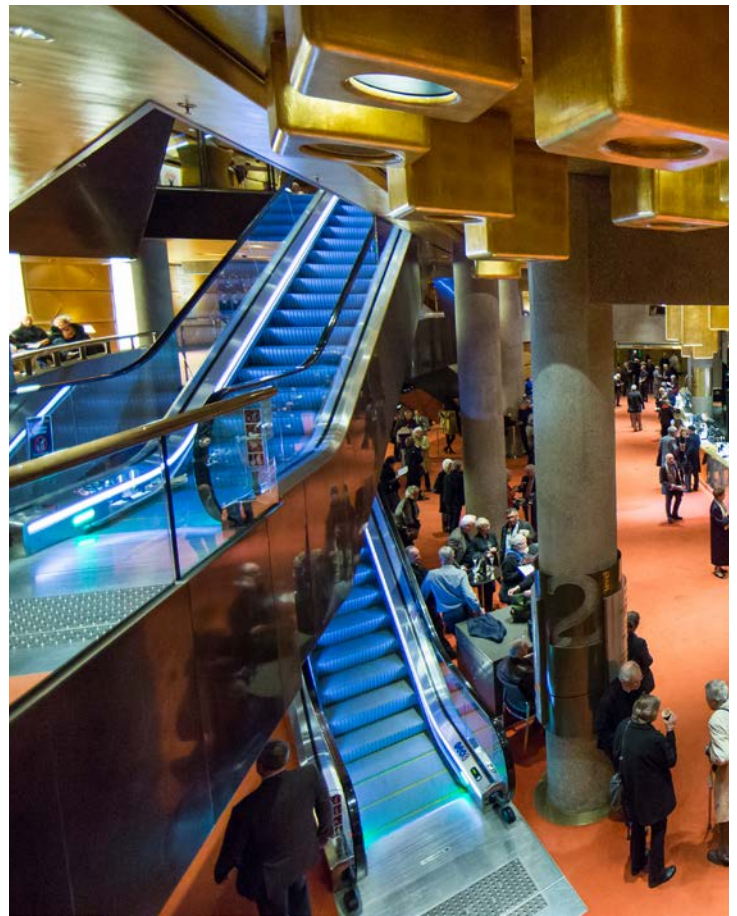
Carnival of the Animals is being performed at Hamer Hall, a concert hall on the south bank of the Yarra River.

It is big and round like a donut!



Inside the Building

When you enter Hamer Hall, there may be many other people in the foyer area. There will be staff wearing black uniforms. They can help you find some important things like the auditorium, where you will sit, the toilets, and the Quiet Area.



Before the Concert

Before you go into the auditorium, you will need a ticket. You may already have your ticket or you may need to collect it from the Box Office.

There are many doors into Hamer Hall. Check your ticket and follow the signs, or ask staff, to find which door to enter. To get to the door you will travel down the lifts, stairs or escalators.

Before going inside the auditorium, you may like to get something to eat or drink, or use the toilet.

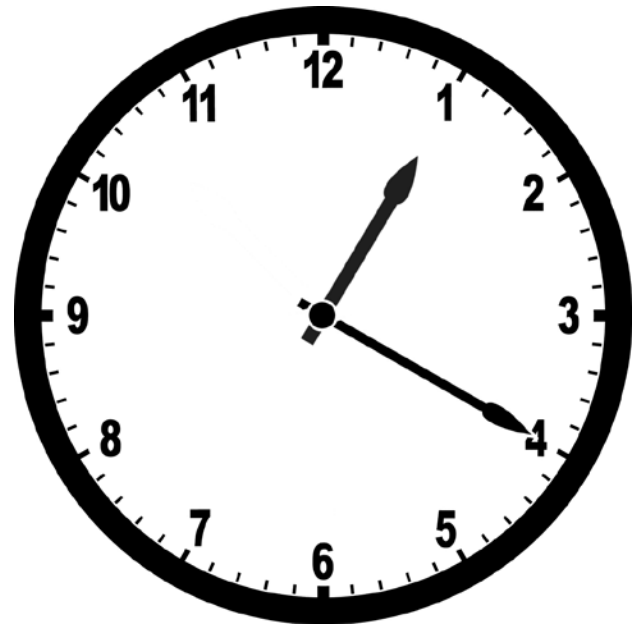
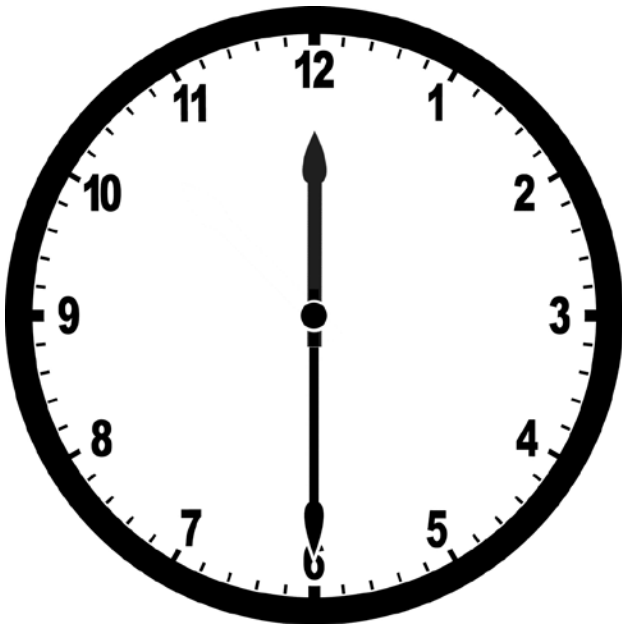


Seating

You can go into the auditorium and find your seat early, if you like. The doors will open about 30 minutes before the show starts.

Before you go into the auditorium, you will need to show your ticket to the usher. Your ticket will tell you the row (letter) and seat (number) you will be sitting in for the whole concert.

The seats are red and orange and feel nice and soft. If you use a wheelchair, there will be a space for you to park it.



During the Performance

The show will go for approximately 50 minutes and has no interval. The show will start at 12:30pm and will finish at 1:20pm.



There is a screen in the auditorium. It's a bit like a cinema! The musicians will play the music and we will be able to watch them up close on the screen.

Sometimes, there will be pictures of animals on the screen, too. Some of these pictures are of puppets were made especially for the show. The performers will move the puppets so they look real, but they are not. They help to tell the story of the **Carnival of the Animals**.



Sometimes, the performers and musicians will wear masks, so that they look like an animal. They will also move their body to imitate how the animal moves. Even though they are very good at pretending to be animals, you will know it's them underneath the masks!

There will be 14 different animal puppets and masks in Carnival of the Animals! Can you spot a lion, an elephant, a shark, an emu, a cuckoo, hens, roosters, donkeys, jellyfish, tortoises, kangaroos, fish, birds, and glow worms? Also keep a look out for a swan costume, people with long ears, and fossils!

Can you move your body like a lion? How about an emu? Can you move like each of the animals in Carnival of the Animals?



If you need to take a break during the show, you are welcome to leave the auditorium and come out into the foyer area with your family member, support worker, or teacher. A Quiet Area with some comfortable beanbags and nice lighting will be available for you to relax in if you'd like to. You can return to the auditorium whenever you feel ready.



Who You Will Meet

Here is a picture of the **Melbourne Symphony Orchestra**. At the performance you will see lots of people on the stage playing all kinds of different musical instruments!

*Have you ever been to see an orchestra play?
What do you remember about the performance?*



This is a picture of Carlo.

Carlo is the **conductor**. His job is to keep everyone in time by moving his arms and body along with the music.

*Can you move your arms and body along to the music?
Don't forget to have a go at conducting during the performance!*



These are pictures of the performers, **Jess**, **Nadine** and **Christian**. Their job is to tell the story of the music. The performers will wear costumes and sometimes they will do funny things, like pulling silly faces, doing funny walks, pretending to play the piano, putting on hats or coats, and making puppets move! They like to make you laugh. You will see the performers on the stage most of the time. Sometimes they will go backstage where you can't see them. During the Wild Asses movement of Carnival of the Animals, Nadine and Christian will move through the auditorium with two donkey puppets. This will only happen once and then they will return to the stage.



At the end of the performance, we can clap our hands to say “thank you” to the conductor, the performers, and the musicians of the Melbourne Symphony Orchestra. We also say “thank you” to the **director**, Emma. Even though you won’t see her on the stage, she is an important person because she imagined all of the ideas and helped the performers to tell the story. Thank you, Emma!